

Powerball



Bluetooth Counter & Application Instructions

RPM Sports

Nenagh Road, Thurles, Co. Tipperary, Ireland
e: info@powerballs.com | **w:** www.powerballs.com

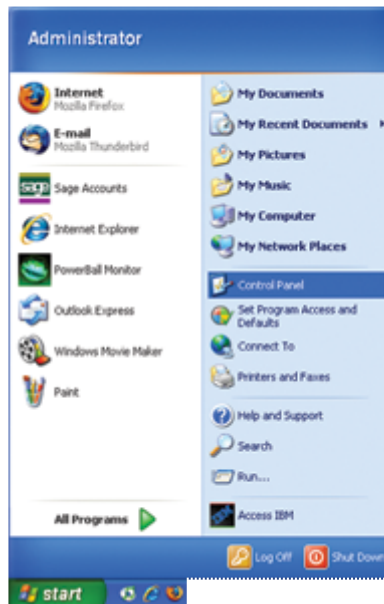
Bluetooth Counter & Application Instructions

Step 1:

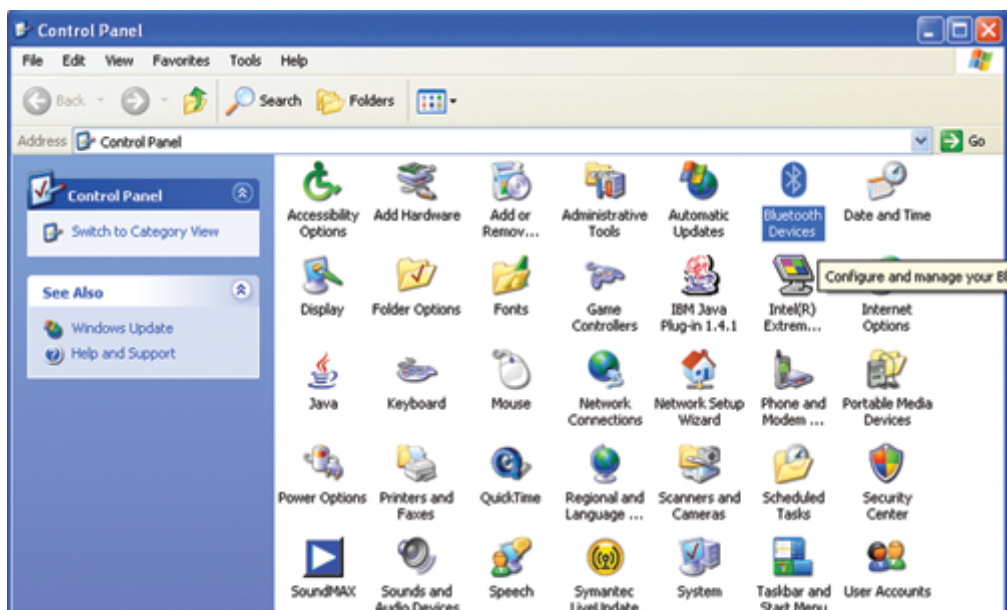
- Visit <http://www.powerballs.com/bluetooth/>
- Download the Powerball Bluetooth Counter Software to your Desktop
- Double-click on the icon and install the software following all on-screen prompts.

Step 2:

- From the **Start Menu**, click **Control Panel**

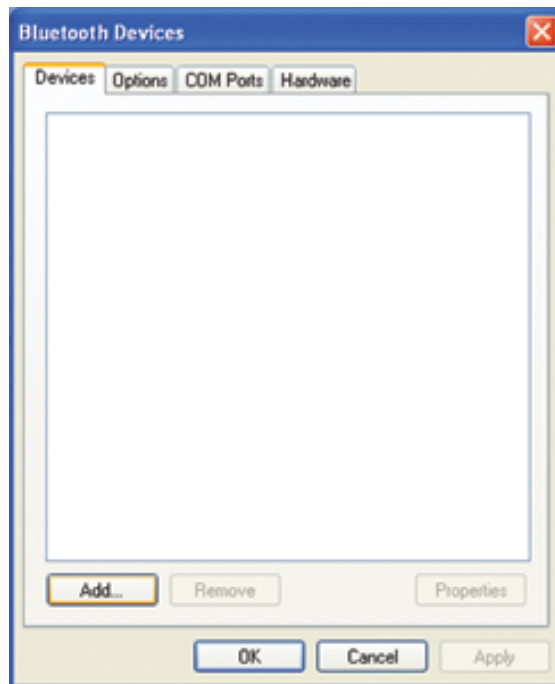


- Double-click on the **Bluetooth Devices** icon.



- Click on the **Add** button

Bluetooth Counter & Application Instructions

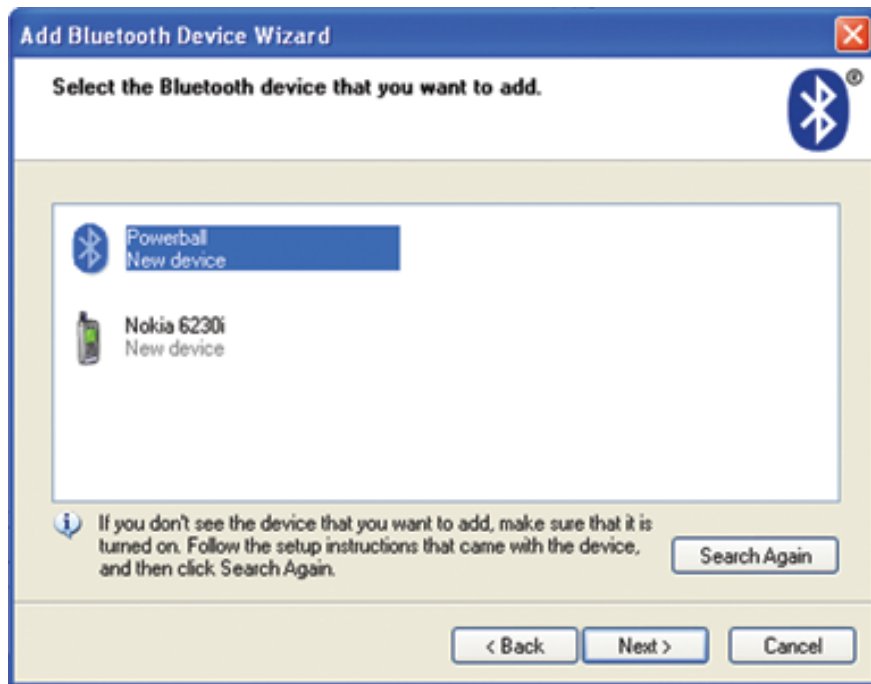


- Place a tick in the box beside **My Device is set up and ready to be found.**

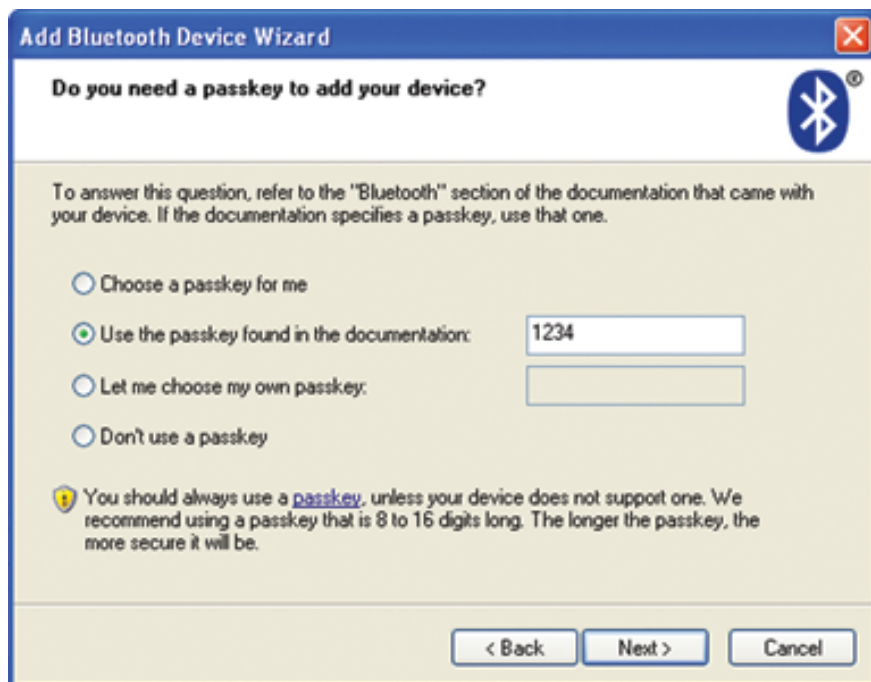


- Start spinning the Powerball *with the Bluetooth counter in place*
- Once the green LED at the top of the counter flashes click **Next**
- When the computer returns a list of devices found, select the **Powerball** device and click **Next**

Bluetooth Counter & Application Instructions

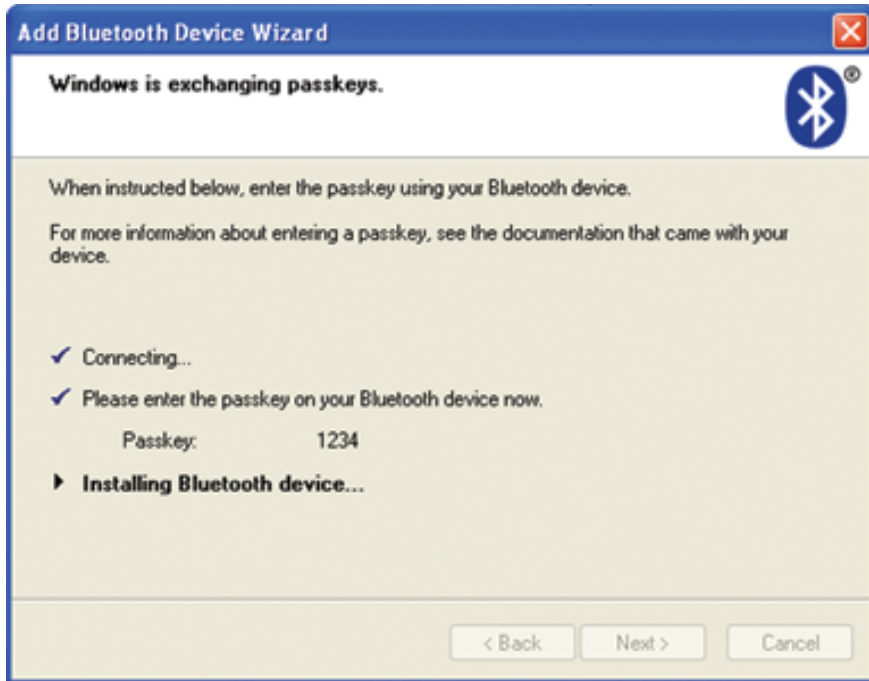


- Select **Use the passkey found in the documentation** and enter **1234** in the space provided.



- Click **Next** and wait while the installation is completed.

Bluetooth Counter & Application Instructions



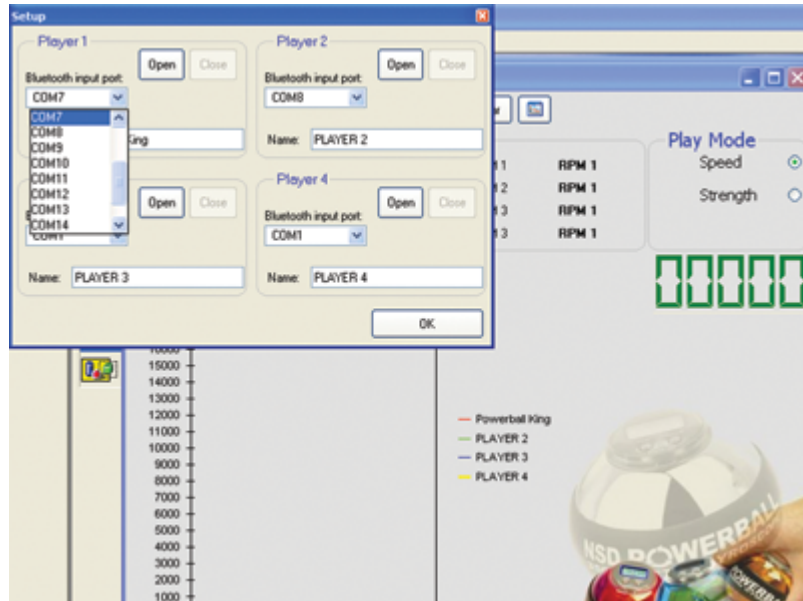
- When this process is finished, the *Incoming* and *Outgoing* ports to be used with your Bluetooth counter are shown



Bluetooth Counter & Application Instructions

Step 3:

- Open the **Powerball Monitor** software (from the **Start Menu**) and click the **Setup** button.



- Enter the player name for **Player 1** and from the drop-down list, select the COM port for the **Incoming Port** given in previous step. In this example the **Incoming Port** is **COM 8**
- Click **OPEN**
- Click **OK**

Bluetooth Counter & Application Instructions

Step 4:

Speed Mode

- In the main **Powerball Monitor** window, click on the **Start** button.



- The software will begin reading the score output from the Bluetooth counter, and will report the score achieved on the graph onscreen. The current and highest speed for each player is shown together with the overall high score shown on the right.
- When finished, click the **Stop** button.

Bluetooth Counter & Application Instructions

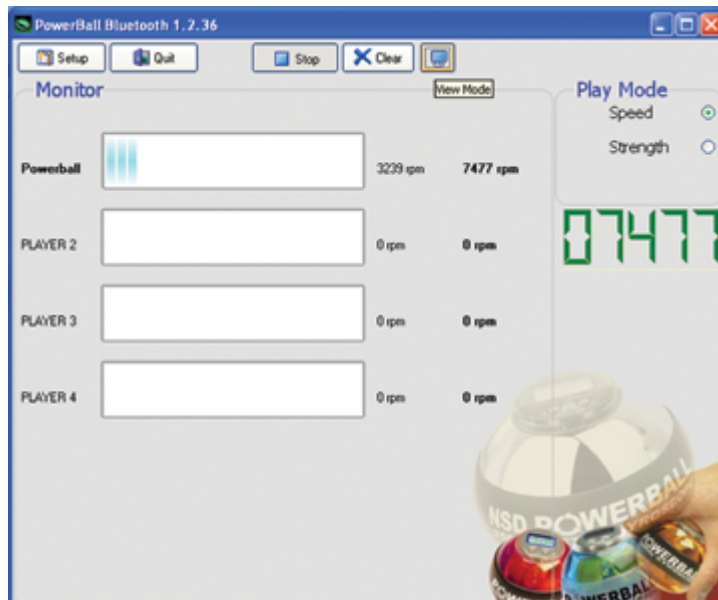
Strength Mode

- Click on the **Strength** option on the right, and select your time (30/60/90 seconds).
- When you click Start the graph starts moving with input from the Powerball, and will automatically refresh every 30 seconds, with the current and highest score recorded at the top, and the overall high score recorded on the right.

Notes:

Competition Mode

To switch to the full-screen *Competition Mode* at any stage, click the **View Mode** button next to the **Clear** button. To switch back to the regular mode click the **View Mode** button again.



Charging the counter

The counter unit is supplied with an AC charger as standard. When the battery has been exhausted (after approx 3 hours of continuous use) will need to be recharged for three hours. Simply attach the lead to the counter unit and leave it to charge. **Do not** leave the counter charging overnight as this will affect battery performance over time.

CAUTION : Do not connect the USB connector to a PC or to other USB device as you will possibly damage the PC or other device

The Powerball Bluetooth counter unit has a range of 10 meters.